

# Actual Flat View





# Floor Plan



**WING - A**  
Typical Floor Plan 1st To 4th Floor

OFFICE NO.	TOTAL CARPET	TOTAL CARPET	OFFICE NO.	TOTAL CARPET	TOTAL CARPET
	Sq.m	Sq.ft		Sq.m	Sq.ft
101,201,301,401	32.55	350.00	106,206,306,406	17.08	184.00
102,202,302,402	51.19	551.00	107,207,307,407	19.26	207.00
103,203,303,403	19.14	206.00	108,208,308,408	19.26	207.00
104,204,304,404	51.20	551.00	109,209,309,409	19.26	207.00
105,205,305,405	36.33	391.00			

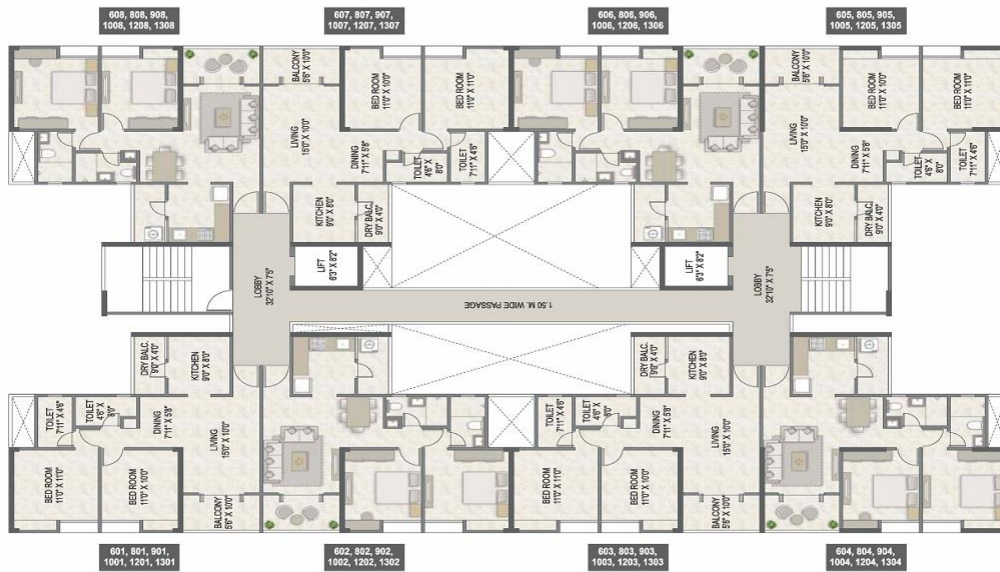
FLAT NO.	TYPE	CARPET AREA	OPEN BALC.	TOTAL CARPET	TOTAL CARPET
		Sq.m	Sq.m	Sq.m	Sq.ft
101,201,301,401, 102,202,302,402, 103,203,303,403, 106,206,306,406, 107,207,307,407, 108,208,308,408	2 BHK	61.49	6.45	69.94	753.00



**WING - A**  
5th Floor Plan

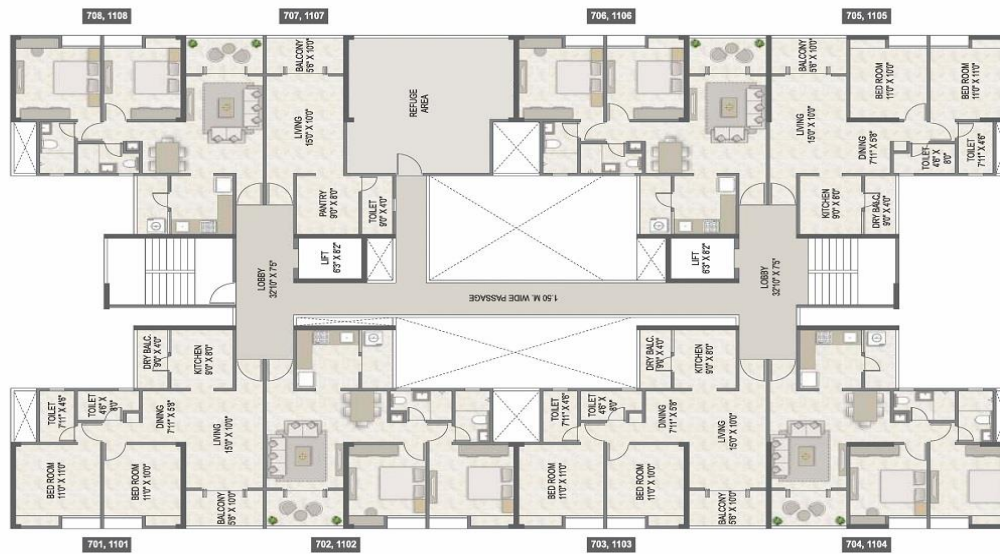
FLAT NO.	TYPE	CARPET AREA	OPEN BALC.	TERRACE (33%)	TOTAL CARPET	TOTAL CARPET
		Sq.m	Sq.m	Sq.m	Sq.m	Sq.ft
501,502,503, 504,505,506	2 BHK	61.49	6.45	---	69.94	753.00
504	2 BHK	61.04	6.32	17.95	87.31	940.00
505	2 BHK	61.04	6.32	54.27	123.63	1331.00





**WING - A**  
Typical Floor Plan 6th & 8th, 9th, 10th, 12th & 13th Floor

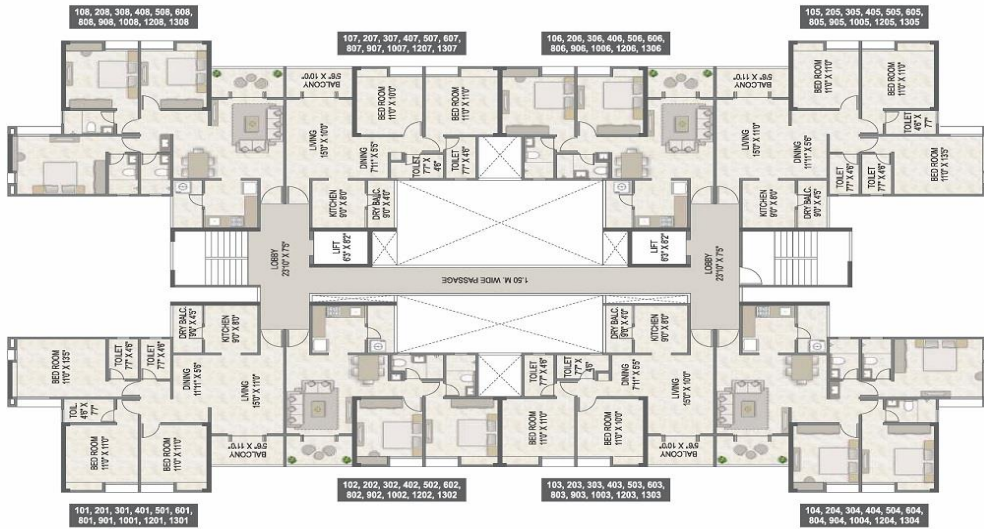
FLAT NO.	TYPE	CARPET AREA Sq.m	OPEN BALC. Sq.m	TOTAL CARPET Sq.m	TOTAL CARPET Sq.ft
601,601,901,1001,1201,1301, 602,802,902,1002,1202,1302, 603,803,903,1003,1203,1303, 606,806,906,1006,1206,1306, 607,807,907,1007,1207,1307, 608,808,908,1008,1208,1308	2 BHK	61.49	8.45	69.94	753.00
604,604,904,1004,1204,1304, 605,805,905,1005,1205,1305	2 BHK	61.04	8.32	69.36	747.00



**WING - A**  
7th & 11th Refuge Floor Plan

FLAT NO.	TYPE	CARPET AREA Sq.m	OPEN BALC. Sq.m	TOTAL CARPET Sq.m	TOTAL CARPET Sq.ft
701,1101, 702,1102, 703,1103, 706,1106, 708,1108	2 BHK	61.49	8.45	69.94	753.00
704,1104, 705,1105	2 BHK	61.04	8.32	69.36	747.00
707,1107	1 RK	26.61	5.09	31.70	341.00

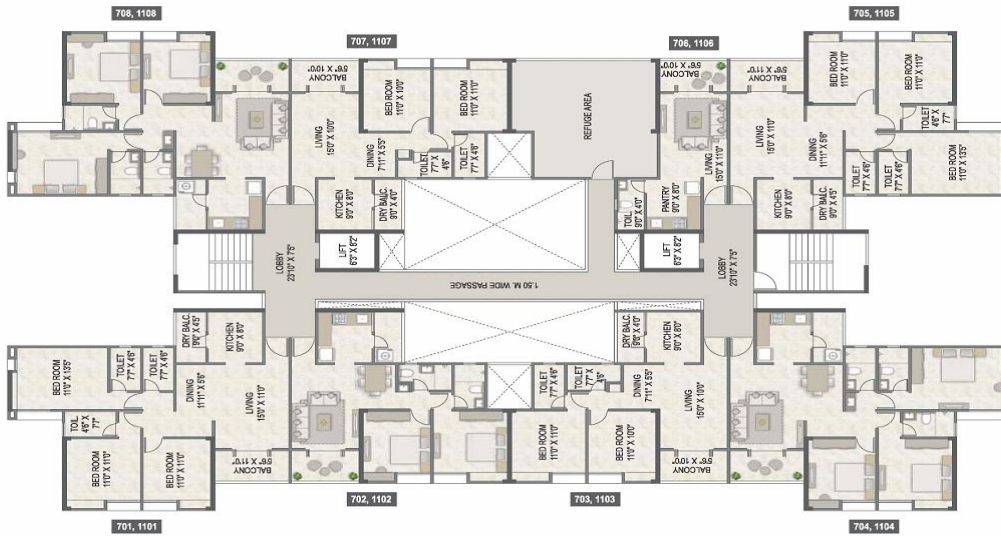




**WING - B**  
Typical Floor Plan  
1st to 6th, 8th, 9th, 10th, 12th & 13th



FLAT NO.	TYPE	CARPET AREA	OPEN BALC.	TOTAL CARPET	TOTAL CARPET
		Sq. m	Sq. m	Sq. m	Sq. ft
101, 201, 301, 401, 501, 601, 801, 901, 1001, 1201, 1301 106, 206, 306, 406, 506, 606, 806, 906, 1006, 1206, 1306	3 BHK	87.59	9.26	96.85	1042.00
102, 202, 302, 402, 502, 602, 802, 902, 1002, 1202, 1302 103, 203, 303, 403, 503, 603, 803, 903, 1003, 1203, 1303 108, 208, 308, 408, 508, 608, 808, 908, 1008, 1208, 1308 107, 207, 307, 407, 507, 607, 807, 907, 1007, 1207, 1307	2 BHK	61.30	8.45	69.75	751.00
104, 204, 304, 404, 504, 604, 804, 904, 1004, 1204, 1304 105, 205, 305, 405, 505, 605, 805, 905, 1005, 1205, 1305	3 BHK	87.59	9.26	96.85	1042.00

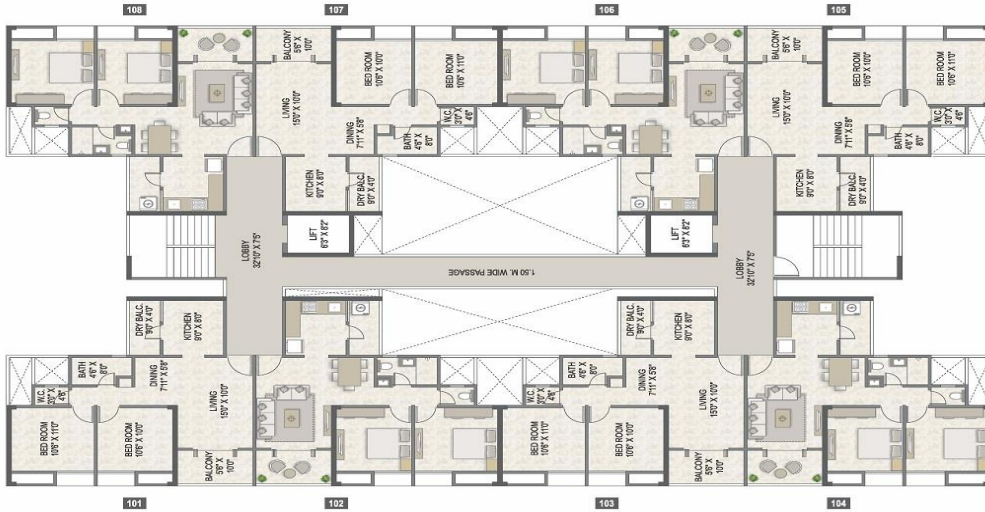


**WING - B**  
7th & 11th Refuge Floor Plan



FLAT NO.	TYPE	CARPET AREA	OPEN BALC.	TOTAL CARPET	TOTAL CARPET
		Sq. m	Sq. m	Sq. m	Sq. ft
701, 1101, 704, 1104, 705, 1105, 708, 1108	3 BHK	87.59	9.26	96.85	1042.00
702, 1102, 703, 1103, 706, 1106	2 BHK	61.30	8.45	69.75	751.00
707, 1107	1 RK	26.61	5.09	31.70	341.00





**4 TALJAI HILLS**  
2 & 3 BHK ELEVATED HOMES

**WING - C**  
First Floor Plan (Mhada)

FLAT NO.	TYPE	CARPET AREA	OPEN BALC.	TOTAL CARPET	TOTAL CARPET
		Sq.m	Sq.m	Sq.m	Sq.ft
101, 102, 103, 104, 105, 106, 107, 108	2 BHK	55.14	8.45	63.59	684.00

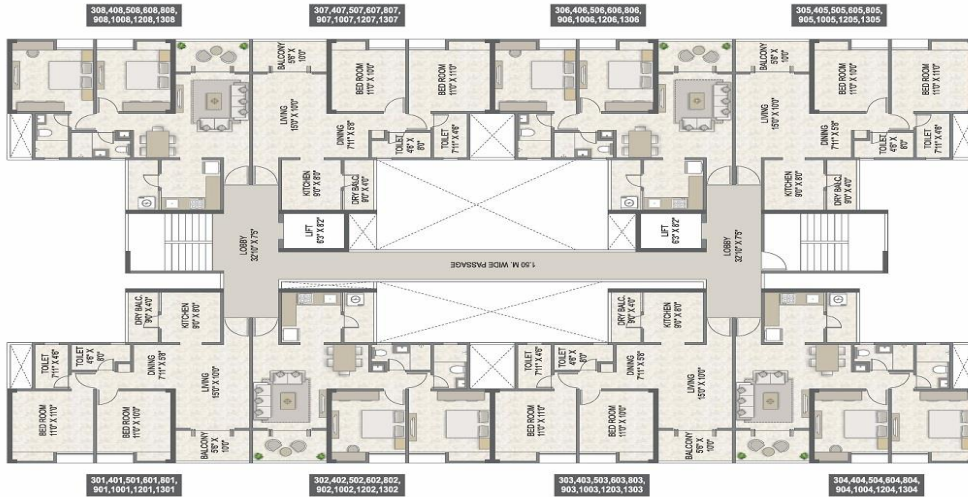


**4 TALJAI HILLS**  
2 & 3 BHK ELEVATED HOMES

**WING - C**  
Second Floor Plan (Mhada)

FLAT NO.	TYPE	CARPET AREA	OPEN BALC.	TOTAL CARPET	TOTAL CARPET
		Sq.m	Sq.m	Sq.m	Sq.ft
201, 202	2 BHK	55.14	8.45	63.59	684.00
203, 204, 205, 206, 207, 208	2 BHK	55.14	8.45	63.59	684.00





**WING - C**  
Typical Floor Plan 3rd To 6th & 8th, 9th, 10th & 12th, 13th Floor

FLAT NO.	TYPE	CARPET AREA Sq.m	OPEN BALC. Sq.m	TOTAL CARPET Sq.m	TOTAL CARPET Sq.ft
301,401,501,601,801,901,1001,1201,1301 302,402,502,602,802,902,1002,1202,1302 303,403,503,603,803,903,1003,1203,1303 304,404,504,604,804,904,1004,1204,1304 305,405,505,605,805,905,1005,1205,1305 306,406,506,606,806,906,1006,1206,1306 307,407,507,607,807,907,1007,1207,1307 308,408,508,608,808,908,1008,1208,1308	2 BHK	61.49	8.45	69.94	753.00



**WING - C**  
7th & 11th Refuge Floor Plan

FLAT NO.	TYPE	CARPET AREA Sq.m	OPEN BALC. Sq.m	TOTAL CARPET Sq.m	TOTAL CARPET Sq.ft
701,1101, 702,1102, 703,1103, 704,1104, 705,1105, 707,1107 708,1108	2 BHK	61.49	8.45	69.94	753.00
706,1106	1 RK	23.02	3.35	26.37	284.00

